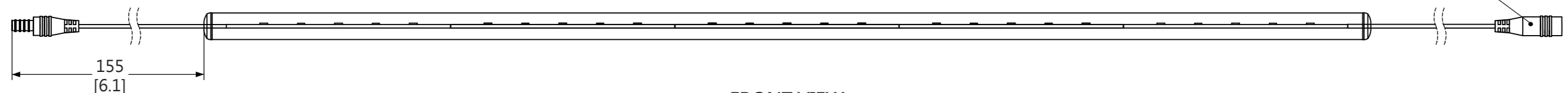
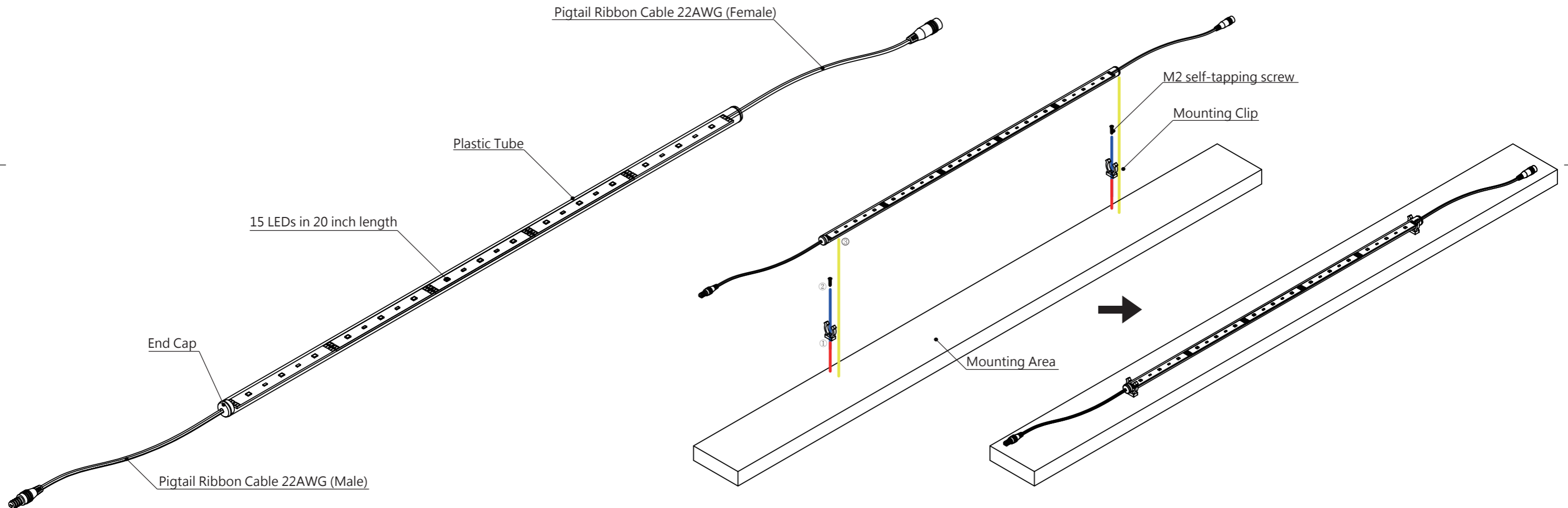


TOP VIEW



FRONT VIEW

Connect to 12V Power Source
Wire marked with whiteline = -ve



ISOMETRIC VIEW

INSTALLATION DIAGRAM

Technical Information (Per module):	
Operating Voltage: DC 12V	
Number of LEDs: 15 LEDs	
Maximum Power Consumption: 230 mA (2.76W)	
Heat Dissipation: Below 45 °C / 113 °F	
LED Type: 2835 LED	
IP Rating: IP20	
Net Weight: 37g	



PRODUCT NAME: Tri-Chip LED Tube		
VERSION: 20 inches		
PRODUCT NUMBER: 285	REVISION: A	PAGE: 1 of 1

All dimensions in millimeters [Inches]